



How to apply ?

From early march
to 15 of June each year

Apply online at <https://candidatures.univ-montp2.fr>

or apply online using the Campus France procedure if needed <http://www.campusfrance.org/fr/>



Supervisors

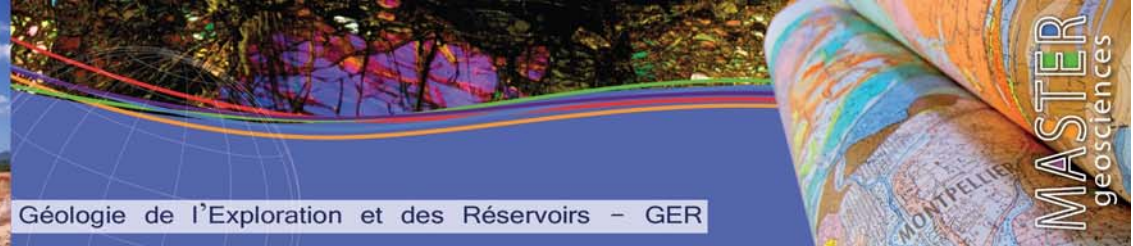
Dr. Roger SOLIVA
roger.soliva@gm.univ-montp2.fr
(33) 4 67 14 32 78

Dr. Aurélien GAY
aurelien.gay@gm.univ-montp2.fr
(33) 4 67 14 45 98

Please, do not throw in public domain

Contact

Secrétariat Master GER
Université Montpellier 2
Place Eugène Bataillon
Bât. 22 CC60
34095 MONTPELLIER FRANCE
(33) 4 67 14 36 44

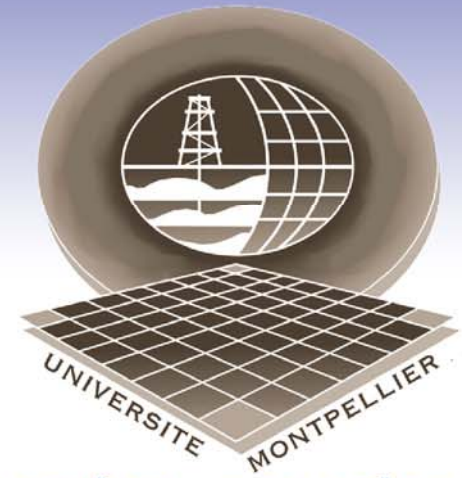


Géologie de l'Exploration et des Réservoirs - GER

One of the top applied Master in Geology
with a focus on field Geology

Professional

Research



www.mention-geosciences.org

Since the first 2004 Class, graduates have had a very important employment record in the **Oil & Gas and Mining industries** both in France and worldwide. Additional and significant positions are found within the **environmental industry** (renewable energy, CO2 capture & storage, geothermal resources, gas storage, water resources...) and in government and non-government agencies. Finally, 10% to 25% graduates undertake a PhD in geosciences.

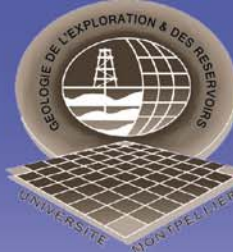


Prepare for excellence

The Master GER fills **society needs** by providing specialists in Geology who contribute to :

- ↳ **Exploration** and supply of energy, mineral and water resources;
- ↳ Safe burial or temporary storage of **fluids** in underground reservoirs;
- ↳ Improved knowledge in **reservoirs architecture** and dynamics, in order to optimise recovery and durability of resources, as well as to enforce environment safety.

Graduates are able to characterize, constrain, model and forecast **reservoir architecture and dynamics**; they integrate geological requirements as from the first stages of exploration, and throughout the whole exploration-production process.



Main aims and skills

- ↳ Forming very **good geologists** specialized in reservoirs architecture and exploration;
- ↳ Forming students able to realize both **field and laboratory works**;
- ↳ Building a **network** using wide interaction with industry;
- ↳ Building **geological reservoirs** and numerical models using well geophysics, 2D/3D seismic interpretation, sequence stratigraphy, mineralized orebodies;

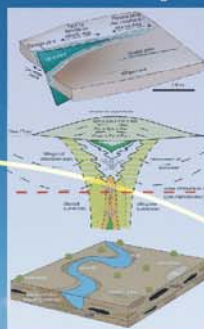


From the Observation...



Analyse

Concept



Courses on the field

- About a **fieldtrip a week** on average
- English skills required
- All courses are given in French

...to the Model



Program

2 years in duration, starting in September each year.

20 students max !

A first year as an intensive learning of the **fundamental skills needed** (i.e. the «building blocks» of earth science) with a special focus on sedimentology, tectonics and reservoir mineralogy all applied through an intense fieldwork (Montpellier area & Spain)

A second year dedicated to the **tools needed for reservoir and mining exploration**. About 75% of courses are supervised by professionals from various fields of industry (Schlumberger, TPA, Eliis, Areva Eramet, BRGM)

A last part (**6 months internship in industry or laboratory**) that consists in a large part of the final evaluation. This internship can be done in any related industry in France or either overseas.

Student association

studentchapter.montpellier@gmail.com

www.facebook.com/student.chapter.montpellier2



The student Chapter (AAPG-SEG) is organising events such as **fieldwork overseas** (England, Scotland, Morocco, Spain)



Since 2010, Montpellier is the first french University participating to the **Imperial Barrel Award**, an international contest to be held in Prague each year